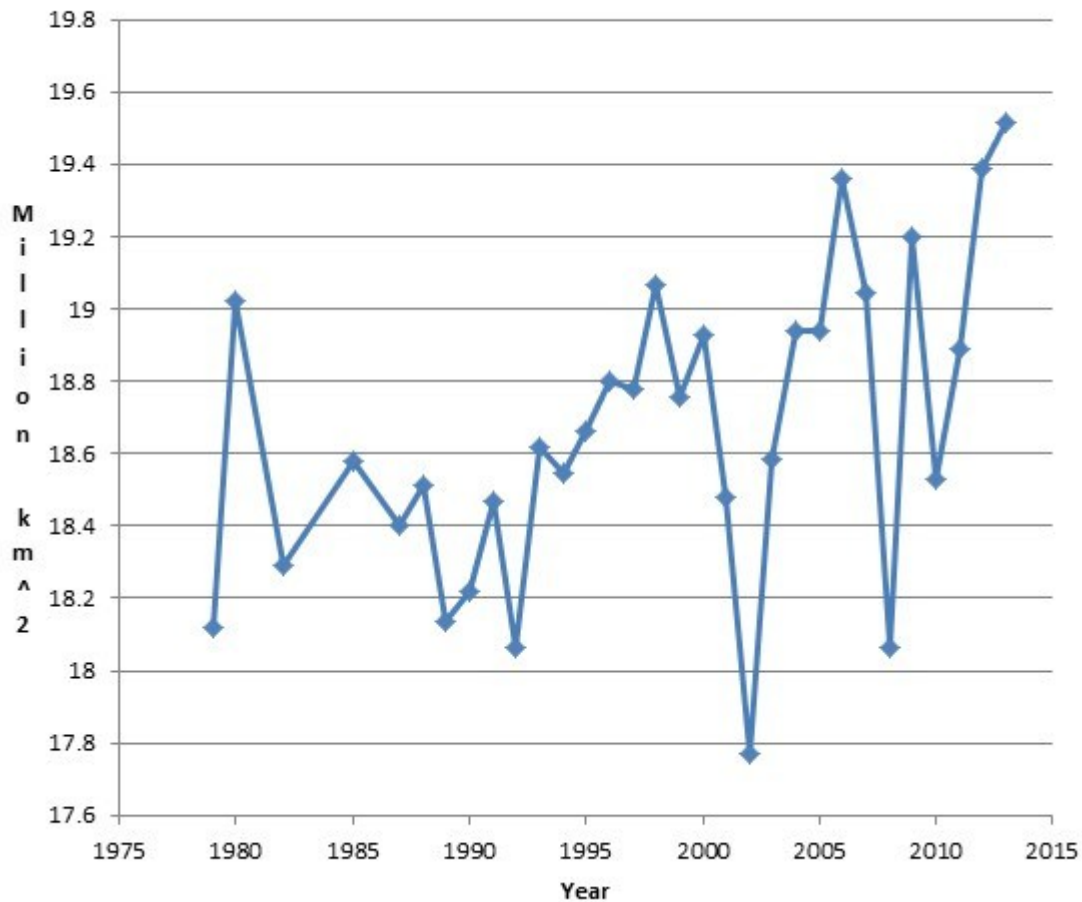


# September 21 Breaks The Record For Most Sea Ice Ever Measured At Either Pole

Posted on [September 23, 2013](#) by [steven goddard](#)

On September 21, Antarctica had the most sea ice ever measured at either pole – 19,514,000 km<sup>2</sup>. The extent of southern hemisphere sea ice has increased dramatically since the start of satellite records in 1979.

### September 21 Antarctic Sea Ice Extent



[Index of /DATASETS/NOAA/G02135/south/daily/data/](#)

Most people with an IQ over 30 understand that ice forms when the air is cold, but this seems to exclude a significant number of government scientists.